

***Borrelia burgdorferi*, Signature-Tagged Mutagenesis Library Clone T10TC087 (IR_BB_L28-BB_L29)**

Catalog No. NR-25826

Product Description: *Borrelia burgdorferi* (*B. burgdorferi*), strain B31 5A18NP1 STM library clone T10TC087 was produced by signature-tagged mutagenesis (STM) of the intergenic region between the BB_L28 and BB_L29 genes.

Lot¹: 70021453

Manufacturing Date: 07MAR2019

TEST	SPECIFICATIONS	RESULTS
Phenotypic Analysis Cellular morphology ² Motility (wet mount)	Spirochete Report results	Spirochete Motile
Purity (post-freeze)³	No growth observed	No growth observed
Viability (post-freeze) Visual observation LIVE/DEAD [®] BacLight [™] Bacterial Viability	Growth Green fluorescence visible	Growth ² Green fluorescence visible (Figure 1) ⁴

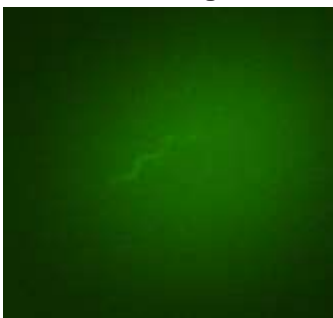
¹NR-25826 was produced by inoculation of the deposited material into Revised Barbour-Stoenner-Kelly medium supplemented with 200 µg/mL kanamycin and 40 µg/mL gentamicin and grown for 10 days at 32°C in a microaerophilic atmosphere to produce this lot.

²10 days at 32°C in a microaerophilic atmosphere in Revised Barbour-Stoenner-Kelly broth supplemented with 200 µg/mL kanamycin and 40 µg/mL gentamicin

³Purity of this lot was assessed for 10 days at 37°C in an aerobic atmosphere with 5% CO₂ on Tryptic Soy agar with 5% defibrinated sheep blood.

⁴Determined with LIVE/DEAD[®] BacLight[™] Bacterial Viability Kit, 1000x magnification (Invitrogen[™] L7007) after a 10-day incubation at 32°C in a microaerophilic atmosphere in Revised Barbour-Stoenner-Kelly broth supplemented with 200 µg/mL kanamycin and 40 µg/mL gentamicin. Cells with a compromised membrane that are dead or dying will stain red, while cells with an intact membrane will stain green.

Figure 1: LIVE/DEAD[®] BacLight[™] Bacterial Viability



/Heather Couch/
Heather Couch

12 APR 2019

Program Manager or designee, ATCC Federal Solutions

ATCC[®], on behalf of BEI Resources, hereby represents and warrants that the material provided under this certificate has been subjected to the tests and procedures specified and that the results described, along with any other data provided in this certificate, are true and accurate to the best of ATCC[®]'s knowledge.

ATCC[®] is a trademark of the American Type Culture Collection.
You are authorized to use this product for research use only. It is not intended for human use.

