

Genomic DNA from *Candida albicans*, Strain P94015

Catalog No. NR-50362

Product Description: Genomic DNA was extracted from a preparation of *Candida albicans* (*C. albicans*), strain P94015. *C. albicans*, strain P94015 is a bloodstream isolate from a person with a bloodstream infection collected in Utah, USA.

Lot^{1,2}: 64362136

Manufacturing Date: 08JUN2016

TEST	SPECIFICATIONS	RESULTS
Genotypic Analysis³ Partial 18S ribosomal RNA (rRNA) gene, internal transcribed spacer (ITS) 1, 5.8S rRNA gene, ITS 2, partial 28S rRNA (~ 500 base pairs) D1D2 region of the 28S rRNA gene (~ 590 base pairs)	≥ 99% sequence identity to <i>C. albicans</i> type strain (GenBank: CP017630.1) ≥ 99% sequence identity to <i>C. albicans</i> type strain (GenBank: CP017630.1)	99.8% sequence identity to <i>C. albicans</i> , type strain (GenBank: CP017630.1) 99.8% sequence identity to <i>C. albicans</i> , type strain (GenBank: CP017630.1)
Agarose Gel Electrophoresis	High molecular weight chromosomal DNA	High molecular weight chromosomal DNA (Figure 1)
Concentration by PicoGreen[®] Measurement	Report results	4.6 µg in 68 µL per vial (67 µg/mL)
Amount per vial	≥ 5 µg per vial	4.6 µg ⁴
Functional Activity by PCR Amplification Partial 28S ribosomal RNA gene	~ 1100 base pair amplicon	~ 1100 base pair amplicon
OD₂₆₀/OD₂₈₀ Ratio	1.7 to 2.1	1.9

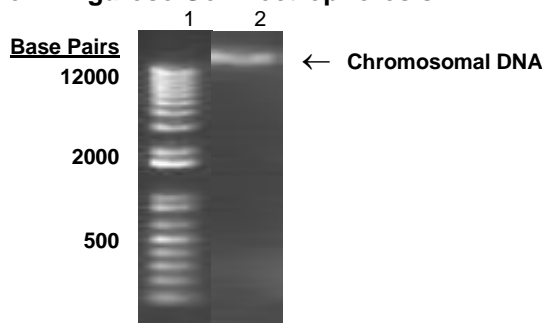
¹The fungal preparation used for extraction of genomic DNA was produced from a culture of NRS-29446 (Lot 60917594). Genomic DNA was extracted using proprietary technology.

²NR-50362, Lot 64362136, was vialied in Tris-HCl EDTA buffer (10 mM Tris-HCl, 1 mM EDTA, pH ~ 8.0).

³Sequence information for *Candida albicans*, strain P94015 is available in GenBank, but does not appear to contain the ITS or D1D2 regions.

⁴Although the amount per vial does not meet the specifications, the slightly lower amount per vial has no effect on the quality of the product.

Figure 1: Agarose Gel Electrophoresis



Lane 1: Invitrogen™ TrackIt 1 Kb Plus DNA Ladder™
 Lane 2: 335 ng of NR-50362

Date: 31 JUL 2017

Signature:



BEI Authentication or designee

ATCC®, on behalf of BEI Resources, hereby represents and warrants that the material provided under this certificate has been subjected to the tests and procedures specified and that the results described, along with any other data provided in this certificate, are true and accurate to the best of ATCC®'s knowledge.

ATCC® is a trademark of the American Type Culture Collection.

You are authorized to use this product for research use only. It is not intended for human use.

