

Bacteroides sp., Strain 4_1_36

Catalog No. HM-258

Product Description: *Bacteroides* sp., strain 4_1_36 was isolated in 2007 from biopsy tissue taken from the terminal ileum of a male patient with active Crohn's Disease in Calgary, Alberta, Canada.

Lot^{1,2}: 63529401

Manufacturing Date: 05JUN2015

TEST	SPECIFICATIONS	RESULTS
Phenotypic Analysis Cellular morphology Colony morphology ³ Motility (wet mount)	Gram-negative rods Report results Report results	Gram-negative rods Circular, raised, entire and translucent (Figure 1) Motile
Genotypic Analysis Sequencing of 16S ribosomal RNA gene (~ 1430 base pairs)	≥ 99% identical to GenBank: ACTC01000133.1 (<i>Bacteroides</i> sp., strain 4_1_36)	≥ 99% identical to GenBank: ACTC01000133.1 (<i>Bacteroides</i> sp., strain 4_1_36)
Purity (post-freeze)⁴ Anaerobic atmosphere Aerobic atmosphere	Growth consistent with expected morphology No growth	Growth consistent with expected morphology No growth
Viability (post-freeze)³	Growth	Growth

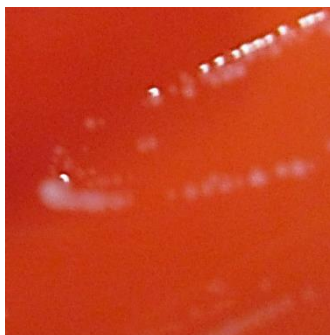
¹Quality control of HMP material is only performed to demonstrate that the material distributed by BEI Resources is identical to the deposited material. It should not be considered a complete characterization of the deposited organism.

²*Bacteroides* sp., strain 4_1_36 was deposited by Professor Emma Allen-Vercoe, Department of Molecular and Cellular Biology, University of Guelph, Guelph, Ontario, Canada. HM-258 was produced by inoculation of the deposited material into Modified Chopped Meat media and incubated for 2 days at 37°C in an anaerobic atmosphere (< 5% O₂; Remel™ Pack-Anaero™). The material from the initial growth was passaged once on Tryptic Soy agar with 5% defibrinated sheep blood kolles which were grown for 2 days at 37°C in an anaerobic atmosphere to produce this lot.

³2 days at 37°C in an anaerobic atmosphere on Tryptic Soy agar with 5% defibrinated sheep blood

⁴2 days at 37°C in an anaerobic atmosphere on Tryptic Soy agar with 5% defibrinated sheep blood and 7 days at 37°C in an aerobic atmosphere with 5% CO₂ on Tryptic Soy agar with 5% defibrinated sheep blood.

Figure 1: Colony Morphology



Date: 19 NOV 2015

Signature:



BEI Resources Authentication

ATCC[®], on behalf of BEI Resources, hereby represents and warrants that the material provided under this certificate has been subjected to the tests and procedures specified and that the results described, along with any other data provided in this certificate, are true and accurate to the best of ATCC[®]'s knowledge.

ATCC[®] is a trademark of the American Type Culture Collection.

You are authorized to use this product for research use only. It is not intended for human use.

