

**Streptococcus sp., Strain BS35b**

**Catalog No. HM-776**

**Product Description:** *Streptococcus* sp., strain BS35b is a human oral isolate.

**Lot<sup>1,2</sup>:** 63529417

**Manufacturing Date:** 22MAY2015

TEST	SPECIFICATIONS	RESULTS
<b>Phenotypic Analysis</b> Cellular morphology Colony morphology <sup>3</sup>  Motility (wet mount)	Gram-positive cocci Report results  Report results	Gram-positive cocci Circular, low convex, entire, smooth and gray (Figure 1) Non-motile
<b>Genotypic Analysis</b> Sequencing of 16S ribosomal RNA gene (~ 1400 base pairs)	Consistent with <i>Streptococcus</i> sp., strain BS35b	Consistent with <i>Streptococcus</i> sp., strain BS35b
<b>Purity (post-freeze)<sup>4</sup></b>	Growth consistent with <i>Streptococcus</i> sp.	Growth consistent with <i>Streptococcus</i> sp.
<b>Viability (post-freeze)<sup>3</sup></b>	Growth	Growth

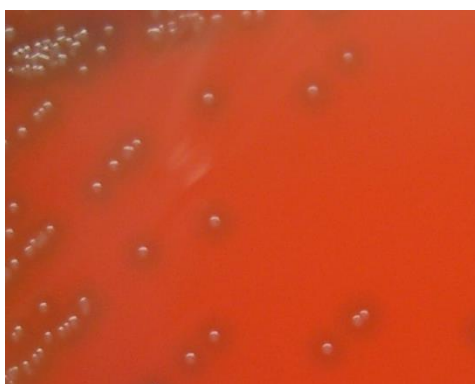
<sup>1</sup>Quality control of HMP material is only performed to demonstrate that the material distributed by BEI Resources is identical to the deposited material. It should not be considered a complete characterization of the deposited organism.

<sup>2</sup>*Streptococcus* sp., strain BS35b was deposited by Maria V. Sizova, Ph.D., Department of Biology, Northeastern University, Boston, Massachusetts, USA. The deposited material was inoculated into Brian Heart Infusion broth and incubated for 1 day at 35°C in an aerobic atmosphere with 5% CO<sub>2</sub>. Broth inoculum was added to Tryptic Soy agar with 5% defibrinated sheep blood kolles which were grown for 1 day at 37°C in an aerobic atmosphere with 5% CO<sub>2</sub> to produce this lot.

<sup>3</sup>1 day on Tryptic Soy agar with 5% defibrinated sheep blood at 37°C in an aerobic atmosphere with 5% CO<sub>2</sub>

<sup>4</sup>Purity of this lot was assessed for 7 days on Tryptic Soy agar with 5% defibrinated sheep blood at 37°C in an aerobic atmosphere with 5% CO<sub>2</sub>.

**Figure 1 – Colony Morphology**



## Certificate of Analysis for HM-776

**Date:** 06 JUL 2015

**Signature:**   
BEI Resources Authentication

ATCC<sup>®</sup>, on behalf of BEI Resources, hereby represents and warrants that the material provided under this certificate has been subjected to the tests and procedures specified and that the results described, along with any other data provided in this certificate, are true and accurate to the best of ATCC<sup>®</sup>'s knowledge.

ATCC<sup>®</sup> is a trademark of the American Type Culture Collection.

You are authorized to use this product for research use only. It is not intended for human use.

