

***Bordetella holmesii*, Strain 35009**

Catalog No. NR-43498

Product Description: *Bordetella holmesii* (*B. holmesii*), strain 35009 was isolated in August 2010 from a human bloodstream sample in the United States.

Lot¹: 62484884

Manufacturing Date: 16MAY2014

TEST	SPECIFICATIONS	RESULTS
Phenotypic Analysis Cellular morphology Colony morphology ² Motility (wet mount) Biochemical characterization Biolog™ System ³	Gram-negative coccobacilli Report results Non-motile Consistent with <i>B. holmesii</i>	Gram-negative coccobacilli Circular, low convex, entire, smooth and cream (Figure 1) Non-motile Consistent with <i>B. holmesii</i>
Genotypic Analysis Sequencing of 16S ribosomal RNA gene (~ 1470 base pairs)	Consistent with <i>B. holmesii</i>	Consistent with <i>B. holmesii</i> ⁴
Purity (post-freeze)⁵	Growth consistent with <i>B. holmesii</i>	Growth consistent with <i>B. holmesii</i>
Viability (post-freeze)²	Growth	Growth

¹NR-43498 was produced by inoculation of the deposited material into Tryptic Soy broth which was plated on Tryptic Soy agar with 5% defibrinated sheep blood and incubated at 37°C for 6 days in an aerobic atmosphere. The material from the initial growth was used to inoculate a Tryptic Soy agar plate and incubated for 7 days at 37°C in an aerobic atmosphere with 5% CO₂. Growth was harvested with Tryptic Soy broth and added to Tryptic Soy agar kolles which were grown 7 days at 37°C in an aerobic atmosphere with 5% CO₂ to produce this lot.

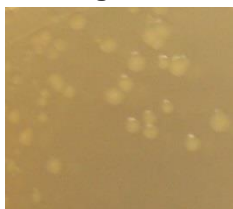
²3 days at 37°C in an aerobic atmosphere on Tryptic Soy agar

³Results interpreted using Biolog™ ID database GEN- III_2.7.1.40.I5G and Biolog™ MicroLog ID software 3/5.2.01 33

⁴≥ 99.9% identical to GenBank: JDSK01000000 (*B. holmesii*, Strain 35009)

⁵Purity of this lot was assessed for 7 days on Tryptic Soy agar at 37°C in an aerobic atmosphere.

Figure 1



Date: 22 AUG 2014

Signature:

Title:

Technical Manager, BEI Authentication or designee

ATCC®, on behalf of BEI Resources, hereby represents and warrants that the material provided under this certificate has been subjected to the tests and procedures specified and that the results described, along with any other data provided in this certificate, are true and accurate to the best of ATCC®'s knowledge.

ATCC® is a trademark of the American Type Culture Collection.

You are authorized to use this product for research use only. It is not intended for human use.

