

**Candida albicans, Strain 220**

**Catalog No. NR-29360**

**Product Description:** *Candida albicans* (*C. albicans*), strain 220 is a human isolate collected in China.

**Lot<sup>1</sup>: 61759115**

**Manufacturing Date: 30MAY2013**

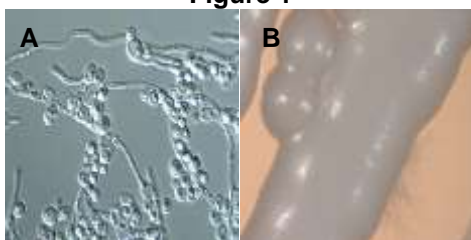
TEST	SPECIFICATIONS	RESULTS
<b>Phenotypic Analysis</b>		
Cellular morphology <sup>2</sup>	Report results	Sub-globose to ovoid, usually single or budding; filaments present (Figure 1A)
Colony morphology <sup>2</sup>	Report results	Off-white, dull, smooth and butyrous with entire or mycelial border (Figure 1B)
Biochemical tests: VITEK <sup>®</sup> 2 Systems Version: 05.01 (YST card)	Consistent with <i>C. albicans</i>	Consistent with <i>C. albicans</i>
<b>Genotypic Analysis</b>		
Sequencing of partial 18S rRNA gene, internal transcribed spacer (ITS) 1, 5.8S rRNA gene, ITS 2, partial 28S rRNA (~ 500 base pairs)	Consistent with <i>C. albicans</i>	Consistent with <i>C. albicans</i>
Sequencing of 26S rRNA gene (~ 595 base pairs)	Consistent with <i>C. albicans</i>	Consistent with <i>C. albicans</i>
<b>Purity<sup>3</sup></b>		
Nutrient broth with 0.1% Yeast Extract at 25°C	No bacterial growth	No bacterial growth
Nutrient broth with 0.1% Yeast Extract at 37°C	No bacterial growth	No bacterial growth
<b>Viability (post-freeze)<sup>2</sup></b>	Growth	Growth

<sup>1</sup>The deposited material was inoculated into Yeast Mold broth and incubated for 7 days at 25°C in an aerobic atmosphere to produce this lot.

<sup>2</sup>5 days at 25°C in an aerobic atmosphere on Yeast Mold agar

<sup>3</sup>Clarity of broth was determined by visual inspection after 4 days at 25°C and 37°C in an aerobic atmosphere.

**Figure 1**



**Date:** 14 JUL 2014

**Signature:**

**Title:** Technical Manager, BEI Authentication or designee

ATCC<sup>®</sup>, on behalf of BEI Resources, hereby represents and warrants that the material provided under this certificate has been subjected to the tests and procedures specified and that the results described, along with any other data provided in this certificate, are true and accurate to the best of ATCC<sup>®</sup>'s knowledge.

ATCC<sup>®</sup> is a trademark of the American Type Culture Collection.

You are authorized to use this product for research use only. It is not intended for human use.

