

Listeria marthii, Strain FSL S4-965

Catalog No. NR-9582

Product Description: *Listeria marthii* (*L. marthii*), strain FSL S4-965 was isolated from flowing river/stream water collected on October 21, 1998, in the Connecticut Hill Wildlife Management Area located in the Finger Lakes region of New York, USA.

Lot¹: 61834520

Manufacturing Date: 11JUL2013

TEST	SPECIFICATIONS	RESULTS
Phenotypic Analysis Cellular morphology Colony morphology ² Hemolysis on blood agar ^{2,3} Motility at 37°C Catalase	Gram-positive rod Report results Non-hemolytic Report results Positive	Gram-positive rods Circular, low convex, entire, opaque, smooth and gray (Figure 1) Non-hemolytic Non-motile Positive
Genotypic Analysis Sequencing of 16S ribosomal RNA gene (~ 1480 bp)	Consistent with <i>L. marthii</i>	Consistent with <i>L. marthii</i> ⁴
Viability (post-freeze)²	Growth	Growth

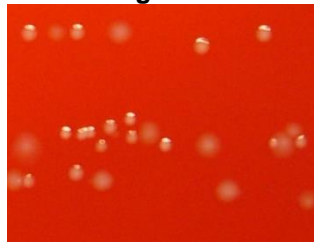
¹NR-9582 was produced by inoculation of the deposited material into Brain Heart Infusion broth with and grown 23 hours at 37°C in an aerobic atmosphere. Broth inoculum was added to Tryptic Soy agar with 5% defibrinated sheep blood kolles which were grown 24 hours at 37°C in an aerobic atmosphere to produce this lot. Purity of this lot was assessed for 7 days under propagation conditions.

²22 hours at 37°C in an aerobic atmosphere on Tryptic Soy agar with 5% defibrinated sheep blood

³*L. marthii* is reported to be non-hemolytic on blood agar; Graves, L. M., et al. "*Listeria marthii* sp. nov., Isolated from the Natural Environment, Finger Lakes National Forest." *Int. J. Syst. Evol. Microbiol.* 60 (2010): 1280-1288. PubMed: 19667380.

⁴≥ 99% identical to *L. marthii*, strain FSL S4-965 (GenBank: EU545981)

Figure 1



Date: 09 JUL 2014

Signature:

Title: Technical Manager, BEI Authentication or designee

ATCC®, on behalf of BEI Resources, hereby represents and warrants that the material provided under this certificate has been subjected to the tests and procedures specified and that the results described, along with any other data provided in this certificate, are true and accurate to the best of ATCC®'s knowledge.

ATCC® is a trademark of the American Type Culture Collection.
 You are authorized to use this product for research use only. It is not intended for human use.

