

***Bartonella birtlesii*, Strain LL-WM9**

**Catalog No. NR-31056**

**Product Description:** *Bartonella birtlesii* (*B. birtlesii*), strain LL-WM9 was isolated in 2002 from a wood mouse (*Apodemus sylvaticus*) in Neston, Cheshire, United Kingdom.

**Lot<sup>1</sup>: 61613204**

**Manufacturing Date: 03APR2013**

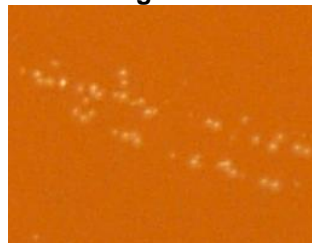
TEST	SPECIFICATIONS	RESULTS
<b>Phenotypic Analysis</b> Cellular morphology Colony morphology <sup>2</sup>  Motility (wet mount) Biochemical tests: Catalase Oxidase	Gram-negative rod Report results  Report results  Negative Negative	Gram-negative rod Circular, low convex, entire, rough and cream (Figure 1) Non-motile  Negative Negative
<b>Genotypic Analysis</b> Sequencing of 16S ribosomal RNA gene (~ 1390 base pairs)	Consistent with <i>Bartonella</i> spp.	Consistent with <i>Bartonella</i> spp. <sup>3</sup>
<b>Viability (post-freeze)<sup>2</sup></b>	Growth	Growth

<sup>1</sup>NR-31056 was produced by inoculation of the deposited material into Heart Infusion broth and grown 8 days at 37°C in an aerobic atmosphere with 5% CO<sub>2</sub>. Broth inoculum was added to *Bartonella* Chocolate agar kolles which were grown 5 days under cultivation conditions. Purity of this lot was assessed for 7 days on *Bartonella* Chocolate agar under cultivation conditions.

<sup>2</sup>7 days at 37°C in an aerobic atmosphere with 5% CO<sub>2</sub> on *Bartonella* Chocolate agar

<sup>3</sup>≥ 99% identical to *B. birtlesii*, strain LL-WM9 (GenBank: AIMC01000043.1)

**Figure 1**



**Date:** 26 JUN 2014

**Signature:**

**Title:** Technical Manager, BEI Authentication or designee

ATCC®, on behalf of BEI Resources, hereby represents and warrants that the material provided under this certificate has been subjected to the tests and procedures specified and that the results described, along with any other data provided in this certificate, are true and accurate to the best of ATCC®'s knowledge.

ATCC® is a trademark of the American Type Culture Collection.

You are authorized to use this product for research use only. It is not intended for human use.

