

Enterococcus faecalis, Strain SF105

Catalog No. NR-31988

Product Description: *Enterococcus faecalis* (*E. faecalis*), strain SF105 is a clinical isolate collected in the mid-1980s in California, USA. This strain has shown resistance to gentamicin and streptomycin.

Lot¹: 61913295

Manufacturing Date: 08AUG2013

TEST	SPECIFICATIONS	RESULTS
Phenotypic Analysis Cellular morphology Colony morphology ² Hemolysis on blood agar ³ Motility (wet mount) Vitek [®] Gram-positive identification card (GP)	Gram-positive cocci Report results Non-hemolytic or α -hemolytic Report results Report results	Gram-positive cocci Circular, convex, entire, smooth and cream (Figure 1) Non-hemolytic Non-motile Consistent with <i>E. faecalis</i>
Genotypic Analysis Sequencing of 16S ribosomal RNA gene (~ 860 base pairs)	Consistent with <i>E. faecalis</i>	Consistent with <i>E. faecalis</i> ⁴
Viability (post-freeze)²	Growth	Growth

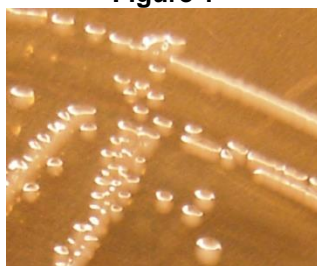
¹*E. faecalis*, strain SF105 was deposited by Michael S. Gilmore, Ph.D., Sir William Osler Professor of Ophthalmology, Department of Ophthalmology, Massachusetts Eye and Ear Infirmary, Boston, Massachusetts, USA. NR-31988 was produced by inoculation of the deposited material into Brain Heart Infusion broth and incubated for 24 hours at 37°C in an aerobic atmosphere. Broth inoculum was added to kolles, which were grown 24 hours at 37°C in an aerobic atmosphere to produce this lot. Purity of this lot was assessed for 7 days under propagation conditions.

²24 hours at 37°C in an aerobic atmosphere on Brain Heart Infusion agar

³24 hours at 37°C in an aerobic atmosphere on Tryptic Soy agar with 5% defibrinated sheep blood

⁴≥ 99% identical to GenBank: AJEE01000014 (*E. faecalis*, strain SF105)

Figure 1



Date: 25 NOV 2013

Signature:

Title: Technical Manager, BEI Authentication or designee

ATCC[®], on behalf of BEI Resources, hereby represents and warrants that the material provided under this certificate has been subjected to the tests and procedures specified and that the results described, along with any other data provided in this certificate, are true and accurate to the best of ATCC[®]'s knowledge.

ATCC[®] is a trademark of the American Type Culture Collection.

You are authorized to use this product for research use only. It is not intended for human use.

