

***Neisseria meningitidis*, Strain 63006**

**Catalog No. NR-32112**

**Product Description:** *Neisseria meningitidis* (*N. meningitidis*), strain 63006 was isolated in 1963 from an infected patient in Burkina Faso. *N. meningitidis*, strain 63006, was deposited as a member of serogroup A.

**Lot<sup>1</sup>: 60860439**

**Manufacturing Date: 18APR2012**

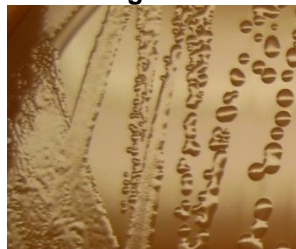
TEST	SPECIFICATIONS	RESULTS
<b>Phenotypic Analysis</b> Cellular morphology Colony morphology <sup>2</sup>  Biochemical tests: Remel RapID™ NH System	Report results Report results  Consistent with <i>N. meningitidis</i>	Gram-negative diplococci Circular, convex, entire, translucent and gray (Figure 1)  Consistent with <i>N. meningitidis</i>
<b>Genotypic Analysis</b> Sequencing of 16S ribosomal RNA gene (~ 1470 base pairs)	Consistent with <i>N. meningitidis</i>	Consistent with <i>N. meningitidis</i> <sup>3</sup>
<b>Viability (post-freeze)<sup>2</sup></b>	Growth	Growth

<sup>1</sup>*N. meningitidis*, strain 63006 was deposited by Lee H. Harrison, M.D., Professor, Departments of Medicine and Infectious Diseases, University of Pittsburgh School of Medicine, Pittsburgh, Pennsylvania, USA. The deposited material was inoculated into *Haemophilus* Test Media (ATCC® medium 2167) and incubated for 24 hours at 37°C in an aerobic atmosphere with 5% CO<sub>2</sub>. Broth was then added to kolles and incubated for 24 hours at 37°C in an aerobic atmosphere with 5% CO<sub>2</sub> to produce this lot.

<sup>2</sup>24 hours at 37°C in an aerobic atmosphere with 5% CO<sub>2</sub> on Chocolate Agar (ATCC® medium 814)

<sup>3</sup>≥ 99% identical to *N. meningitidis*, strain 63006 (GenBank: ANSI01000023)

**Figure 1**



**Date:** 22 MAY 2013

**Signature:** 

**Title:** Technical Manager, BEI Authentication or designee

ATCC®, on behalf of BEI Resources, hereby represents and warrants that the material provided under this certificate has been subjected to the tests and procedures specified and that the results described, along with any other data provided in this certificate, are true and accurate to the best of ATCC®'s knowledge.

ATCC® is a trademark of the American Type Culture Collection. You are authorized to use this product for research use only. It is not intended for human use.

