

**Enterococcus faecium, Strain E1039**

**Catalog No. NR-28977**

**Product Description:** *Enterococcus faecium* (*E. faecium*), strain E1039 is a non-infectious fecal isolate collected from a normal individual in the Netherlands in 1998 during a community surveillance program.

**Lot<sup>1</sup>: 61086676**

**Manufacturing Date: 11JUL2012**

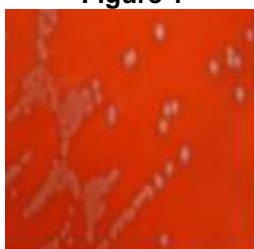
TEST	SPECIFICATIONS	RESULTS
<b>Phenotypic Analysis</b> Cellular morphology Colony morphology <sup>2</sup>  Hemolysis  Analytical profile index (API <sup>®</sup> 20 Strep) Catalase	Report results Report results  Non-hemolytic or α-hemolytic  Consistent with <i>E. faecium</i> Negative	Gram-positive cocci Circular, convex, entire, smooth and gray (Figure 1) α-hemolytic  Consistent with <i>E. faecium</i> Negative
<b>Genotypic Analysis</b> Sequencing of 16S ribosomal RNA gene (~ 1490 base pairs)	Consistent with <i>E. faecium</i>	Consistent with <i>E. faecium</i> <sup>3</sup>
<b>Viability (post-freeze)<sup>2</sup></b>	Growth	Growth

<sup>1</sup>*E. faecium*, strain E1039 was deposited by Willem van Schaik, Department of Medical Microbiology, University Medical Center Utrecht, Utrecht, The Netherlands. The deposited material was inoculated into Tryptic Soy broth and incubated for 24 hours at 37°C in an aerobic atmosphere. Broth inoculum was added to kolles, which were grown 24 hours at 37°C in an aerobic atmosphere to produce this lot. Purity of this lot was assessed for 7 days under propagation conditions.

<sup>2</sup>24 hours at 37°C in an aerobic atmosphere on Tryptic Soy agar with 5% defibrinated sheep blood\

<sup>3</sup>Also consistent with *Enterococcus lactis*

**Figure 1**



**Date:** 18 NOV 2013

**Signature:**

**Title:** Technical Manager, BEI Authentication or designee

ATCC<sup>®</sup>, on behalf of BEI Resources, hereby represents and warrants that the material provided under this certificate has been subjected to the tests and procedures specified and that the results described, along with any other data provided in this certificate, are true and accurate to the best of ATCC<sup>®</sup>'s knowledge.

ATCC<sup>®</sup> is a trademark of the American Type Culture Collection.

You are authorized to use this product for research use only. It is not intended for human use.

