

Shigella sp., Strain D9

Catalog No. HM-87

Product Description: *Shigella* sp., strain D9 was isolated in 2007 from normal biopsy tissue taken from the cecum of a 59-year-old male patient undergoing a colon cancer screen in Calgary, Alberta, Canada.

Lot^{1,2}: 60932416

Manufacturing Date: 25APR2012

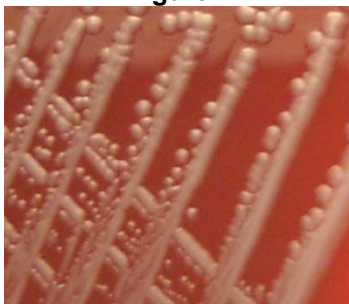
TEST	SPECIFICATIONS	RESULTS
Phenotypic Analysis Cellular morphology Colony morphology ³	Report results Report results	Gram-negative rod Circular, peaked, entire and gray (Figure 1)
Genotypic Analysis Sequencing of 16S ribosomal RNA gene (~ 730 base pairs)	≥ 99% identical to GenBank: ACDL01000000; Locus GG657405 (<i>Shigella</i> sp., strain D9)	≥ 99% identical to GenBank: ACDL01000000; Locus GG657405 (<i>Shigella</i> sp., strain D9)
Viability (post-freeze)³	Growth	Growth

¹Quality control of HMP material is only performed to demonstrate that the material distributed by BEI Resources is identical to the deposited material. It should not be considered a complete characterization of the deposited organism.

²*Shigella* sp., strain D9 (also referred to as strain 36_3_1A) was deposited by Professor Emma Allen-Vercoe, Department of Molecular and Cellular Biology, University of Guelph, Guelph, Ontario, Canada. The deposited material was inoculated into Tryptic Soy Broth and incubated for 24 hours at 37°C in an aerobic atmosphere. The material from the initial growth was added to Kolles for 24 hours at 37°C in an aerobic atmosphere to produce this lot.

³24 hours at 37°C in an aerobic atmosphere on Tryptic Soy Agar with 5% defibrinated sheep blood

Figure 1



Date: 09 AUG 2012

Signature: 

Title: Technical Manager, BEI Authentication or designee

ATCC®, on behalf of BEI Resources, hereby represents and warrants that the material provided under this certificate has been subjected to the tests and procedures specified and that the results described, along with any other data provided in this certificate, are true and accurate to the best of ATCC®'s knowledge.

ATCC® is a trademark of the American Type Culture Collection. You are authorized to use this product for research use only. It is not intended for human use.

