

## Genomic DNA from *Escherichia coli*, Strain NCDC 909-51

**Catalog No. NR-2652**

**Product Description:** Genomic DNA was isolated from a preparation of enteroinvasive *Escherichia coli* (EIEC), strain NCDC 909-51, serotype O28a,28c:K73(B18):NM. The bacterial preparation was produced by propagation of BEI Resources NR-101.

**Lot<sup>1</sup>: 5107306**

**Manufacturing Date: 08MAR2006**

TEST	SPECIFICATIONS	RESULTS
<b>Sequencing of 16S Ribosomal RNA Gene (First ~ 500 base pairs)</b>	Consistent with <i>Escherichia coli</i>	Consistent with <i>Escherichia coli</i> <sup>2</sup>
<b>Agarose Gel Electrophoresis</b>	High molecular weight chromosomal DNA	High molecular weight chromosomal DNA (Figure 1)
<b>Concentration by PicoGreen® Measurement</b>	4 to 6 µg in 25 to 100 µL per vial	4.3 µg in 61 µL per vial (70 µg/mL)
<b>Functional Activity by PCR Amplification</b> 16S ribosomal RNA gene	~ 1500 bp amplicon	~ 1500 bp amplicon
<b>OD<sub>260</sub>/OD<sub>280</sub> Ratio</b>	1.7 to 1.9	1.9
<b>Bacterial Inactivation</b> 10% of total yield plated on Nutrient Agar (BD 213000) and incubated for 7 days at 37°C; limit of detection is 0.1 colony-forming units per vial	No viable bacteria detected	No viable bacteria detected

<sup>1</sup>The bacterial preparation used for extraction of genomic DNA was produced by inoculation of BEI Resources NR-101 into LB Broth (ATCC® 60-2100). After incubation for 16 hours at 37°C, genomic DNA was extracted using proprietary technology.

<sup>2</sup>Also consistent with *Shigella* species.

**Date:** 15 AUG 2006

**Signature:** Signature on File

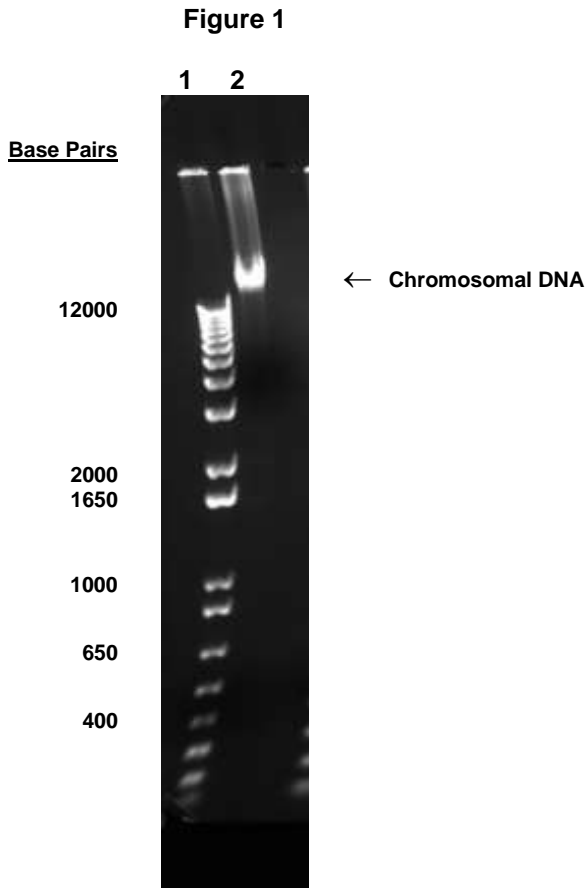
**Title:** Technical Manager, BEI Authentication

ATCC®, on behalf of BEI Resources, hereby represents and warrants that the material provided under this certificate has been subjected to the tests and procedures specified and that the results described, along with any other data provided in this certificate, are true and accurate to the best of ATCC®'s knowledge.

ATCC® is a trademark of the American Type Culture Collection.

You are authorized to use this product for research use only. It is not intended for human use.





Lane 1: Invitrogen™ 1Kb DNA Ladder™  
Lane 2: 200 ng of NR-2652