

Vector pLNCX2

Catalog No. NR-2819

Product Description: The Clontech Laboratories vector pLNCX2 is a plasmid designed for retroviral gene delivery and expression. The plasmid was produced in *Escherichia coli* and extracted.¹

Lot¹: 58549865

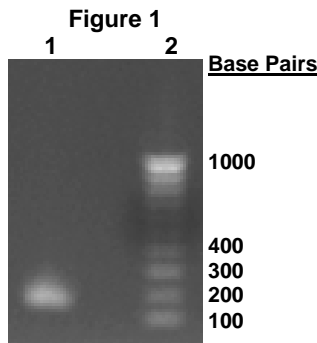
Manufacturing Date: 25MAR2009

TEST	SPECIFICATIONS	RESULTS
PCR Amplification and Sequencing of HLA Insert	~ 160 bp amplicon pLNCX2 multiple cloning site	~ 160 bp amplicon (Figure 1) pLNCX2 multiple cloning site
Agarose Gel Electrophoresis Digestion with <i>HindIII</i> ² and <i>NotI</i> ³	~ 6100 bp vector; no insert	~ 6100 bp vector; no insert (Figure 2)
PicoGreen[®] Measurement DNA content DNA concentration	20 to 50 ng Report results	20 ng 0.20 ng per μ L (0.20 μ g per mL)
Effective Bacterial Transformation	\geq 100 colonies per ng	\geq 100 colonies per ng

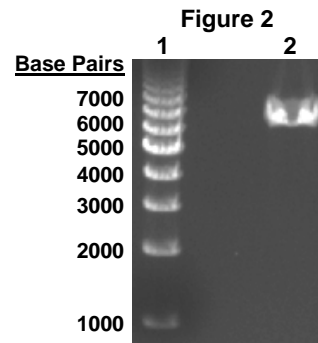
¹Produced in *Escherichia coli* DH5 α ™-T1^R cells (Invitrogen™ 12297-016) and extracted using the EndoFree[®] Plasmid Maxi Kit (QIAGEN[®] 12362)

²*HindIII* (New England BioLabs, Inc. R0104)

³*NotI* (New England BioLabs, Inc. R0189)



Lane 1: PCR Amplicon (multiple cloning site)
Lane 2: Bio-Rad EZ Load 100 bp Molecular Ruler



Lane 1: Bio-Rad EZ Load 1 kb Molecular Ruler
Lane 2: NR-2819 digested with *HindIII* and *NotI*

Date: 25 MAY 2011

Signature: *Dorothy C. Young*

Title: Technical Manager, BEI Authentication or designee

ATCC[®], on behalf of BEI Resources, hereby represents and warrants that the material provided under this certificate has been subjected to the tests and procedures specified and that the results described, along with any other data provided in this certificate, are true and accurate to the best of ATCC[®]'s knowledge.

ATCC[®] is a trademark of the American Type Culture Collection.
You are authorized to use this product for research use only. It is not intended for human use.

