

Listeria monocytogenes, Strain FSL J2-071

Catalog No. NR-13232

Product Description: *Listeria monocytogenes* (*L. monocytogenes*), strain FSL J2-071 was isolated in New York in February 1994 from a case of bovine septicemia.

Lot¹: 58792198

Manufacturing Date: 01OCT2009

TEST	SPECIFICATIONS	RESULTS
Phenotypic Analysis Cellular morphology Colony morphology ² Biochemical characterization: Analytical profile index (API® Listeria) β-hemolysis ³ Catalase activity	Gram-positive rod Report results Consistent with <i>L. monocytogenes</i> Positive Positive	Gram-positive rod Circular, flat, entire and gray (Figure 1) Consistent with <i>L. monocytogenes</i> Positive Positive
Genotypic Analysis Sequencing of 16S ribosomal RNA gene (~ 1410 bp) RiboPrinter Microbial Characterization System	Consistent with <i>L. monocytogenes</i> Consistent with <i>L. monocytogenes</i>	Consistent with <i>L. monocytogenes</i> ⁴ Consistent with <i>L. monocytogenes</i>
PCR Assay of Extracted DNA 16S ribosomal RNA gene	~ 1500 bp amplicon	~ 1500 bp amplicon
Viability (post-freeze)²	Growth	Growth

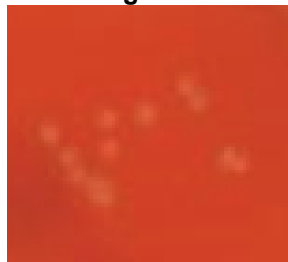
¹NR-13232 was produced by inoculation of the deposited material into Brain Heart Infusion broth and grown 24 hours at 37°C and aerobic atmosphere. Broth inoculum was added to Kolles (Tryptic Soy Agar with 5% defibrinated sheep blood) which were grown 24 hours at 37°C and aerobic atmosphere to produce this lot.

²24 hours at 37°C and aerobic atmosphere on Tryptic Soy Agar with 5% defibrinated sheep blood

³Hemolytic activity on blood agar is generally used to distinguish *L. monocytogenes* from other *Listeria* species

⁴Also consistent with other *Listeria* species

Figure 1



Date: 02 JUN 2010

Signature: Signature on File

Title: Technical Manager, BEI Authentication or designee

ATCC®, on behalf of BEI Resources, hereby represents and warrants that the material provided under this certificate has been subjected to the tests and procedures specified and that the results described, along with any other data provided in this certificate, are true and accurate to the best of ATCC®'s knowledge.

ATCC® is a trademark of the American Type Culture Collection.



You are authorized to use this product for research use only. It is not intended for human use.