

## Genomic DNA from *Francisella tularensis* subsp. *holarctica*, Strain 15 (Gaisky Live Vaccine Strain)

Catalog No. NR-3026

**Product Description:** Genomic DNA was isolated from a preparation of *Francisella tularensis* (*F. tularensis*) subsp. *holarctica*, strain 15 (Gaisky Live Vaccine Strain). *F. tularensis* subsp. *holarctica*, strain 15 was isolated from a water vole (*Arvicola terrestris*) by Gaisky in Russia (1936), where it was used as a live vaccine.

Lot<sup>1</sup>: 7513131

Manufacturing Date: 19JUL2005

TEST	SPECIFICATIONS	RESULTS
Sequencing of 16S Ribosomal RNA Gene (~ 1160 bp)	Consistent with <i>F. tularensis</i> subsp. <i>holarctica</i>	Consistent with <i>F. tularensis</i> subsp. <i>holarctica</i> <sup>2</sup>
Molecular Subtyping by PCR Amplification <sup>3</sup>	Type B (subsp. <i>holarctica</i> )	Type B (subsp. <i>holarctica</i> )
Agarose Gel Electrophoresis	High molecular weight chromosomal DNA	High molecular weight chromosomal DNA (Figure 1)
Concentration by PicoGreen <sup>®</sup> Measurement	4 to 6 µg in 25 to 100 µL per vial	4.6 µg in 52 µL per vial (88 µg/mL)
Functional Activity by PCR Amplification 16S ribosomal RNA gene Molecular subtyping <sup>3</sup>	~ 1500 bp amplicon ~ 1250 bp amplicon (Type B)	~ 1500 bp amplicon ~ 1250 bp amplicon (Type B)
OD <sub>260</sub> /OD <sub>280</sub> Ratio	1.7 to 1.9	1.8
Bacterial Inactivation 10% of total yield plated on CHA with 5% rabbit blood <sup>4</sup> ; limit of detection is 0.5 colony-forming units per vial	No viable bacteria detected	No viable bacteria detected

<sup>1</sup>The bacterial preparation used for extraction of genomic DNA was produced by propagation of BEI Resources NR-14 (Lot: 3670414) on Cystine Heart Agar plus 5% defibrinated rabbit blood. After incubation for 24 hours at 37°C and aerobic atmosphere with 5% CO<sub>2</sub>, genomic DNA was extracted using proprietary technology.

<sup>2</sup>Also consistent other *F. tularensis* subspecies

<sup>3</sup>Petersen, J. M., et al. "Laboratory Analysis of Tularemia in Wild-Trapped, Commercially Traded Prairie Dogs, Texas, 2002." *Emerg. Infect. Dis.* 10 (2004): 419-425. PubMed: 15109407.

<sup>4</sup>Cystine Heart Agar plus defibrinated rabbit blood; incubated for 7 days at 37°C and aerobic atmosphere with 5% CO<sub>2</sub>

Date: 05 MAR 2010

Signature: Signature on File

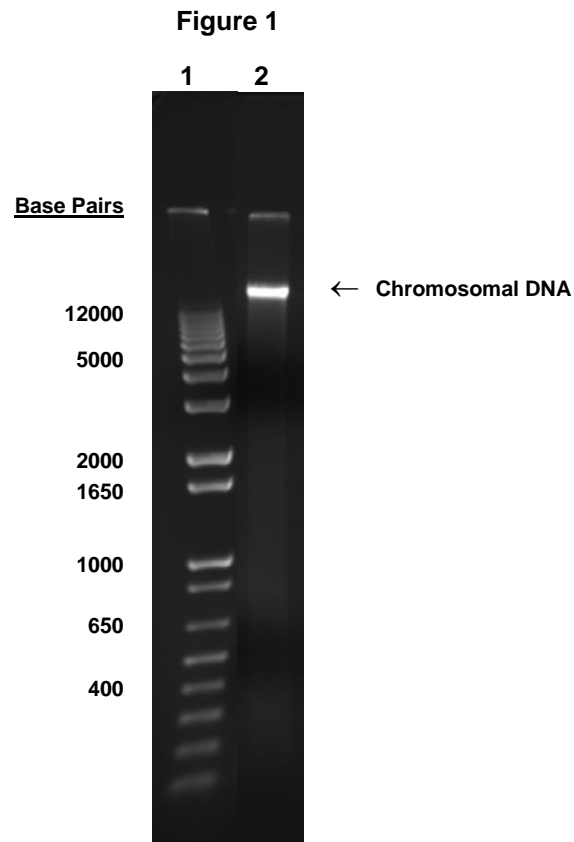
Title: Technical Manager, BEI Authentication or designee

ATCC<sup>®</sup>, on behalf of BEI Resources, hereby represents and warrants that the material provided under this certificate has been subjected to the tests and procedures specified and that the results described, along with any other data provided in this certificate, are true and accurate to the best of ATCC<sup>®</sup>'s knowledge.

ATCC<sup>®</sup> is a trademark of the American Type Culture Collection.

You are authorized to use this product for research use only. It is not intended for human use.





Lane 1: Invitrogen™ TrackIt™ 1 Kb Plus DNA Ladder  
Lane 2: 200 ng of NR-3026