

***Salmonella enterica* subsp. *enterica*, 2004 Pennsylvania Tomato Outbreak, Serovar Thompson, Isolate 3**

Catalog No. NR-4321

Product Description: *Salmonella enterica* (*S. enterica*) subsp. *enterica* serovar Thompson is found in domestic and wild animals and is generally spread to humans via consumption of contaminated water or food resulting in gastroenteritis.

Lot¹: 58194768

Manufacturing Date: 23MAY2008

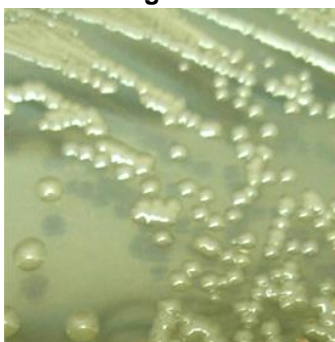
TEST	SPECIFICATIONS	RESULTS
Phenotypic Analysis Cellular morphology Colony morphology ² Analytical profile index (API® 20 E)	Gram-negative rod Report results Consistent with <i>Salmonella</i>	Gram-negative rod Circular, entire, low convex, translucent Consistent with <i>Salmonella</i>
Genotypic Analysis Sequencing of 16S ribosomal RNA gene (~ 1410 bp)	Consistent with <i>S. enterica</i> subsp. <i>enterica</i>	Consistent with <i>S. enterica</i> subsp. <i>enterica</i>
PCR Assay of Extracted DNA 16S ribosomal RNA gene	~ 1500 bp amplicon	~ 1500 bp amplicon
Viability (post-freeze)³	Growth	Growth

¹*S. enterica* subsp. *enterica*, 2004 Pennsylvania Tomato Outbreak, Serovar Thompson, Isolate 3 was isolated from the stool of a patient with diarrhea during the 2004 *Salmonella* outbreak in Pennsylvania (PA) and deposited by Carol H. Sandt, Molecular Microbiology Section, Bureau of Laboratories, PA Department of Health, Lionville, PA. The isolated material was grown on Tryptic Soy Agar plates which were used to inoculate Tryptic Soy Broth. The culture was cryogenically preserved in 20% glycerol at -70°C until deposition. NR-4321 was produced by inoculation of the deposited material into Tryptic Soy Broth (BD 211825) and grown 24 hours at 37°C and aerobic atmosphere. Broth inoculum was added to Kolles which were grown 24 hours at 37°C and aerobic atmosphere to produce this lot.

²24 hours at 37°C and aerobic atmosphere in Tryptic Soy Agar (BD 236950)

³24 hours at 37°C and aerobic atmosphere in Tryptic Soy Broth

Figure 1



Date: 16 JUL 2008

Signature: Signature on File

Title: Technical Manager, BEI Authentication or designee

ATCC[®], on behalf of BEI Resources, hereby represents and warrants that the material provided under this certificate has been subjected to the tests and procedures specified and that the results described, along with any other data provided in this certificate, are true and accurate to the best of ATCC[®]'s knowledge.

ATCC[®] is a trademark of the American Type Culture Collection.

You are authorized to use this product for research use only. It is not intended for human use.

